

PROJECT DESCRIPTION FOR SCOPING (PDS)

Proposed Cement Grinding Project

Big Boss Cement, Inc.

Brgys. Dela Cruz and Anupul, Bamban, Tarlac

PROJECT DESCRIPTION FOR SCOPING (PDS)

1. Basic Project Information

Project Information	
Name of Project	Proposed Cement Grinding Project
Location	Brgys. Dela Cruz and Anupul, Bamban Tarlac The Project is to be situated within the 15 hectares property of BigBoss Cement, Inc.
Background and Nature of Project	The proposed Cement Grinding Project is a new Project of Big Boss Cement, Inc. To initiate the application, a project briefing and technical scoping is requested for the preparation of the Environmental Impact Statement (EIS) which is required as per Procedural Manual of DENR Administrative Order No. 30 Series of 2003.
Size and Scale	5 million metric tons per year (MMTPY) of cement at
Proponent Profile	
Name of Proponent	Big Boss Cement, Inc.
Address	G/F Abbot Bldg., 28 Madison St., Mandaluyong City
Contact Person and Details of Proponent's Authorized Representative	MR. GILBERT CRUZ President Landline number: (632) 531-9752 Email: gilbert.cruz@bbholdings.com.ph

2. Project description

Project Location Area	<p>The project will be located within the 20 hectares project area covered of Big Boss.</p> <p>The proposed development is situated in Bamban, Tarlac near the administrative boundary of Tarlac and Pampanga. The general coordinates of the project site location is 15°17'32" North and 120°34'35" East (WGS), which generally lies at the foot of Mt. Pinatubo, and can be accessed via MacArthur Highway. As seen in Figure 3, the Bamban River, Sacobia River, and tributary creek of Cutcut River can also be found near the project site.</p> <p>The site is approximately 300m at the east of MacArthur Highway and 300m from a tributary creek of the Cutcut River. The project site is also currently traversed by several irrigation canals since the area is generally used for agriculture. Moreover, a path of a previous creek was also observed in past satellite images from Google Earth®.</p> <p>Provided in the Annexes are the following:</p> <ul style="list-style-type: none">• Annex A is the location map of the project site• Annex B is the Vicinity Map• Annex C is the Topographic Survey of Project Site
-----------------------	---

PROJECT DESCRIPTION FOR SCOPING (PDS)

Proposed Cement Grinding Project

Big Boss Cement, Inc.

Brys. Dela Cruz and Anupul, Bamban, Tarlac

	<ul style="list-style-type: none">• Annex D shows the photographs of the project area• Annex E shows the Site Development Plan
Project Rationale	<p>To address requirements of the construction industry which is highly concentrated in urban areas, especially in Metro Manila and its surrounding areas in Luzon and to answer the significant amount of unanswered demand for cement in the various rural areas of the country with relatively smaller developments including local government infrastructure projects.</p> <p>There is also added scarcity in supply to these rural areas due to constraints in the storage of cement, and the difficulty in the transportation brought by the conditions of the local weather and climate, and the underdeveloped transportation infrastructure.</p>
Project Components List	<p>The plant will be designed to be efficient and environment friendly. Unlike a complete full scale cement operation which produces clinker using a kiln and require producing heat up to 1,000 degrees centigrade; Big Boss Cement, Inc. will only be a grinding operation. The grinding process using the main raw material - Clinker mixed with other pozzolanic materials will use a Ball Mill.</p> <p>This project has the following components:</p> <ol style="list-style-type: none">1. Material storage facility for:<ol style="list-style-type: none">a. Raw, chemical and process materialsb. Fuel, lubricants and similar materialsc. Finished products2. Processing facility for:<ol style="list-style-type: none">a. Material preparation and handling (e.g. screening, sorting, rinsing etc.)b. Material size reduction/agglomerationc. Heating/Drying/curing (direct heat/energy application)d. Processing (e.g., mixing, blending, refining, milling, sanding, glazing, bleaching, dyeing, spinning, painting, soldering, electroplating etc.)e. Finishing (e.g. sorting, filling, packaging, assembly etc.)3. Support Facilities<ol style="list-style-type: none">a. Generator set/sb. Conveyor beltc. administrative officed. Dormitorye. Motor Poolf. Truck Parking & Drivers' Canteeng. Pollution Control Facility / Waste Management Facility<ul style="list-style-type: none">• Dust collection system• Drainage system• Material recovery facility• Toxic and hazardous waste management system

PROJECT DESCRIPTION FOR SCOPING (PDS)

Proposed Cement Grinding Project

Big Boss Cement, Inc.

Brys. Dela Cruz and Anupul, Bamban, Tarlac

Project Phases, Key Environmental Aspects, Wastes, Issues, Built-in Measures		
Major Activities Description / Details key environmental aspects or activities	Potential Impact, Nature and estimate of Major Emissions	Impact Mitigation, Built-in management measures and facilities planned
<i>Preconstruction Phase</i>		
Land	Incompatibility with land use	Land reclassification and land use conversion if required
<i>Construction Phase</i>		
Generation of domestic solid waste and wastewater and hazardous wastes	Contamination of soil and water quality	<ul style="list-style-type: none"> Regular hauling of garbage Provision of MRF and HazMat Facility Provision of septic tanks and implementation of septage management
Use of domestic water	Water resource use competition	Use of water from local water district
Construction of the grinding mill complex	Air emission (TSP, PM10, PM2.5, SOX, NOX) and noise pollution from equipment and vehicles	<ul style="list-style-type: none"> Training on proper equipment and vehicle use and speed Proper maintenance, designation of no idling zone Routine equipment and vehicle maintenance and good house keeping Water sprays/sprinkling
Storage, handling and transport of construction materials	Health and safety hazards	<ul style="list-style-type: none"> Health and safety policies Safety inspections and toolbox meetings Use of PPEs First aid training
<i>Operation Phase</i>		
MMT Formation, SP and IEC	Regular monitoring	Drafting and signing of the MOA, Designation of members, formulation of Manual of operations and Work and Financial Plan; development of SDP for the community; Regular meetings
Cement Grinding operation	Air emission and noise pollution	<ul style="list-style-type: none"> Training on proper equipment use and speed Water sprays, use of enclosures, barriers, and buffer zones High stack Regular ambient air and noise monitoring Engage in carbon sequestration projects such as tree planting
	Employment generation	Preference will be given to qualified Bamban residents
	Increase in economic opportunities through associated incomes and taxes	These are predominantly positive effects, no mitigation measures necessary; payment of taxes; provision of social development
	Broken cement bags	Collection and storage in MRF
	Generation of hazardous wastes such as used oil, busted	<ul style="list-style-type: none"> Used oil will be collected, transported and treated through an accredited TSD facility.

PROJECT DESCRIPTION FOR SCOPING (PDS)

Proposed Cement Grinding Project

Big Boss Cement, Inc.

Brys. Dela Cruz and Anupul, Bamban, Tarlac

	bulbs and contaminated rags and gloves	<ul style="list-style-type: none"> Busted Fluorescent Bulbs will be properly stored in accumulation until there is sufficient inventory for proper disposal through an accredited TSD facility. Contaminated rags and gloves are stored in accumulation until there is sufficient inventory for proper disposal through an accredited TSD facility.
	Water pollution	Compliance with DENR standards on water quality
	Air emission and noise pollution	<ul style="list-style-type: none"> Training on proper equipment use and speed Water sprays, use of enclosures, barriers, and buffer zones Installation of dust collectors Regular ambient air and noise monitoring Engage in carbon sequestration projects such as tree planting
	Increase in economic opportunities through associated incomes and taxes	These are predominantly positive effects, no mitigation measures necessary; payment of taxes; provision of social development
Abandonment		
<ul style="list-style-type: none"> Removal of wastes and oil spills if any Removal of all equipment Actual rehabilitation 	<ul style="list-style-type: none"> Change in land use Loss of jobs and community programs 	<ul style="list-style-type: none"> Grading and stabilization works Retrenchment package Labor support programs
Project Cost and Duration	PhP 6,000,000,000.00	
	After securing all the required and necessary clearances and permits, construction will commence and will be completed in six months and will commence operation after 2 months from construction.	
List of Annexes		
Map of Project Area	Annex A: Location Map	
	Annex B: Vicinity Map	
	Annex C: Topographic Survey of Project Site	
Collage of Photos or plates of proposed project site	Annex D: Photographs of the Site	
Site Development	Annex E: Site Development Plan (preliminary)	

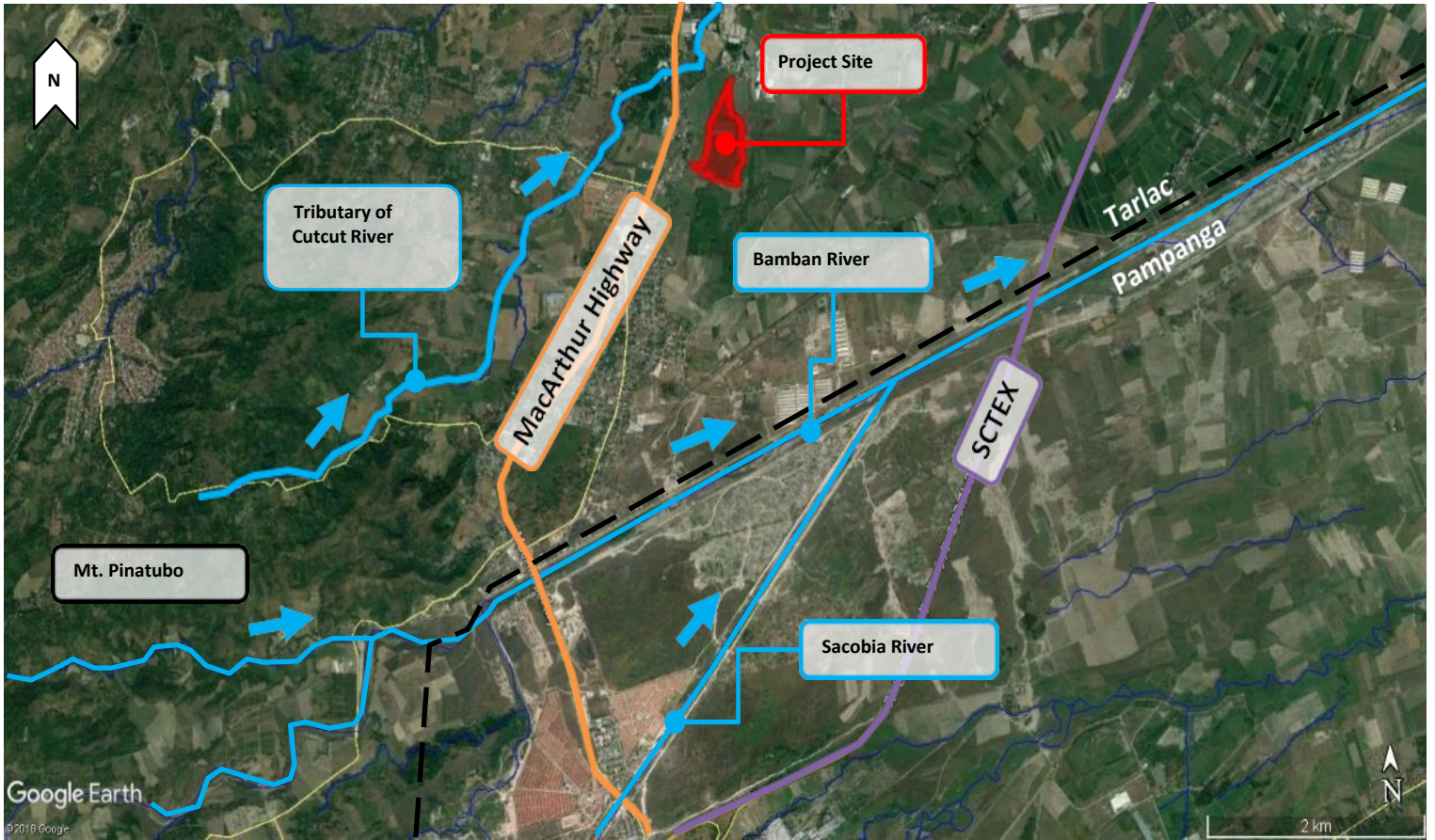
PROJECT DESCRIPTION FOR SCOPING (PDS)

Proposed Cement Grinding Project

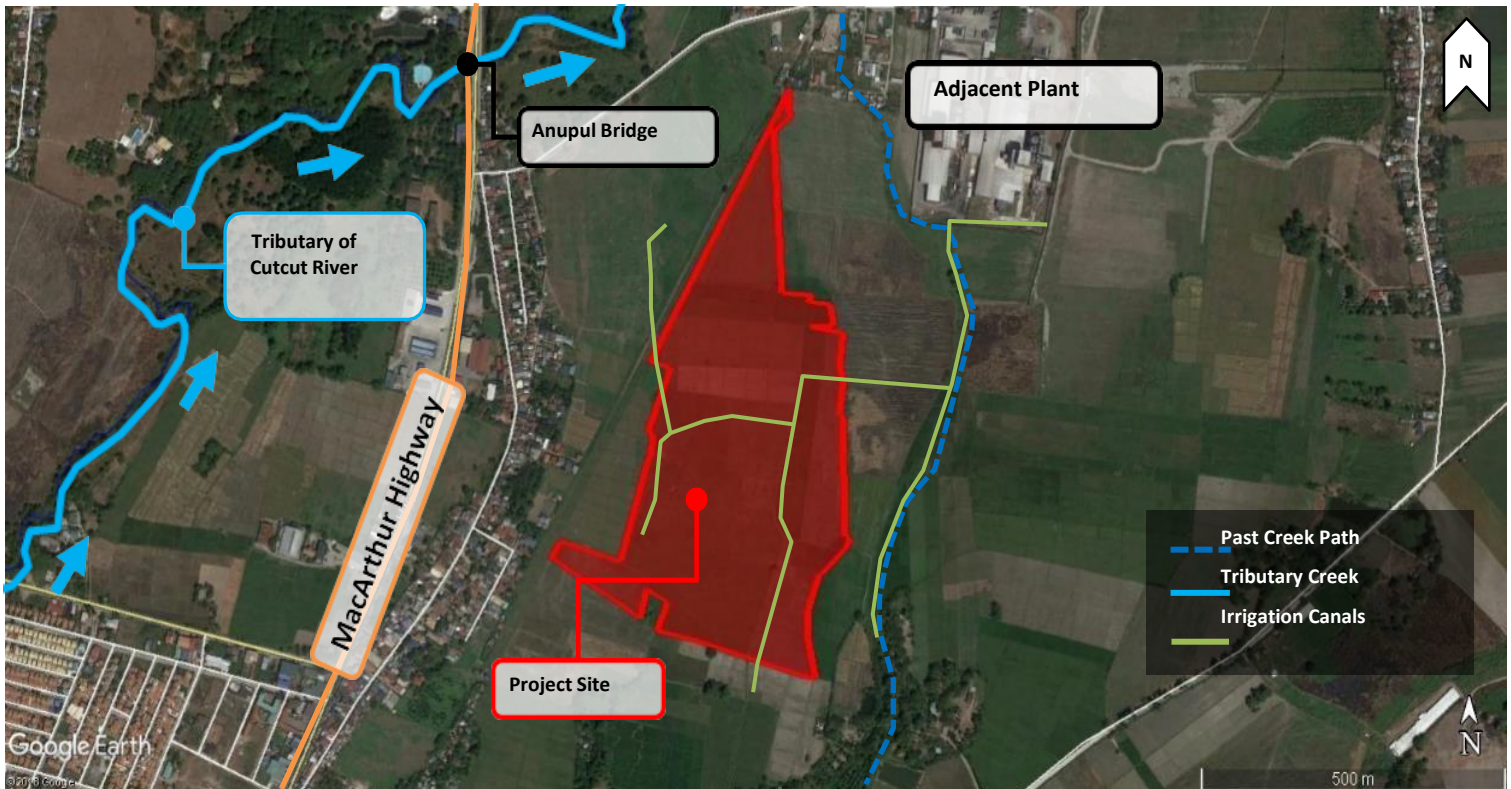
Big Boss Cement, Inc.

Brys. Dela Cruz and Anupul, Bamban, Tarlac

Annex A: Location Map



Annex B: Vicinity Map



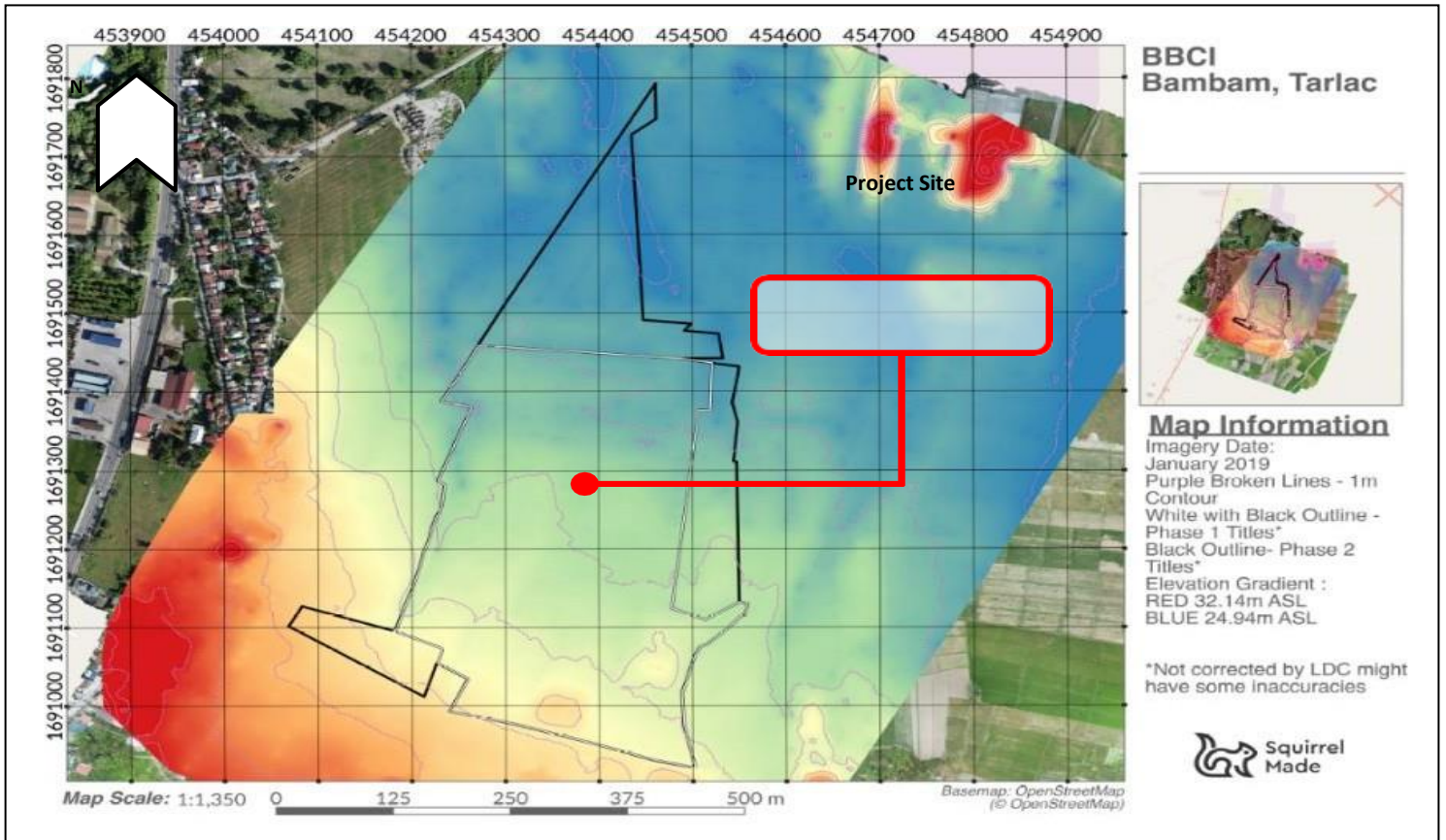
PROJECT DESCRIPTION FOR SCOPING (PDS)

Proposed Cement Grinding Project

Big Boss Cement, Inc.

Brys. Dela Cruz and Anupul, Bamban, Tarlac

Annex C: Topographic Survey of Project Site



PROJECT DESCRIPTION FOR SCOPING (PDS)

Proposed Cement Grinding Project

Big Boss Cement, Inc.

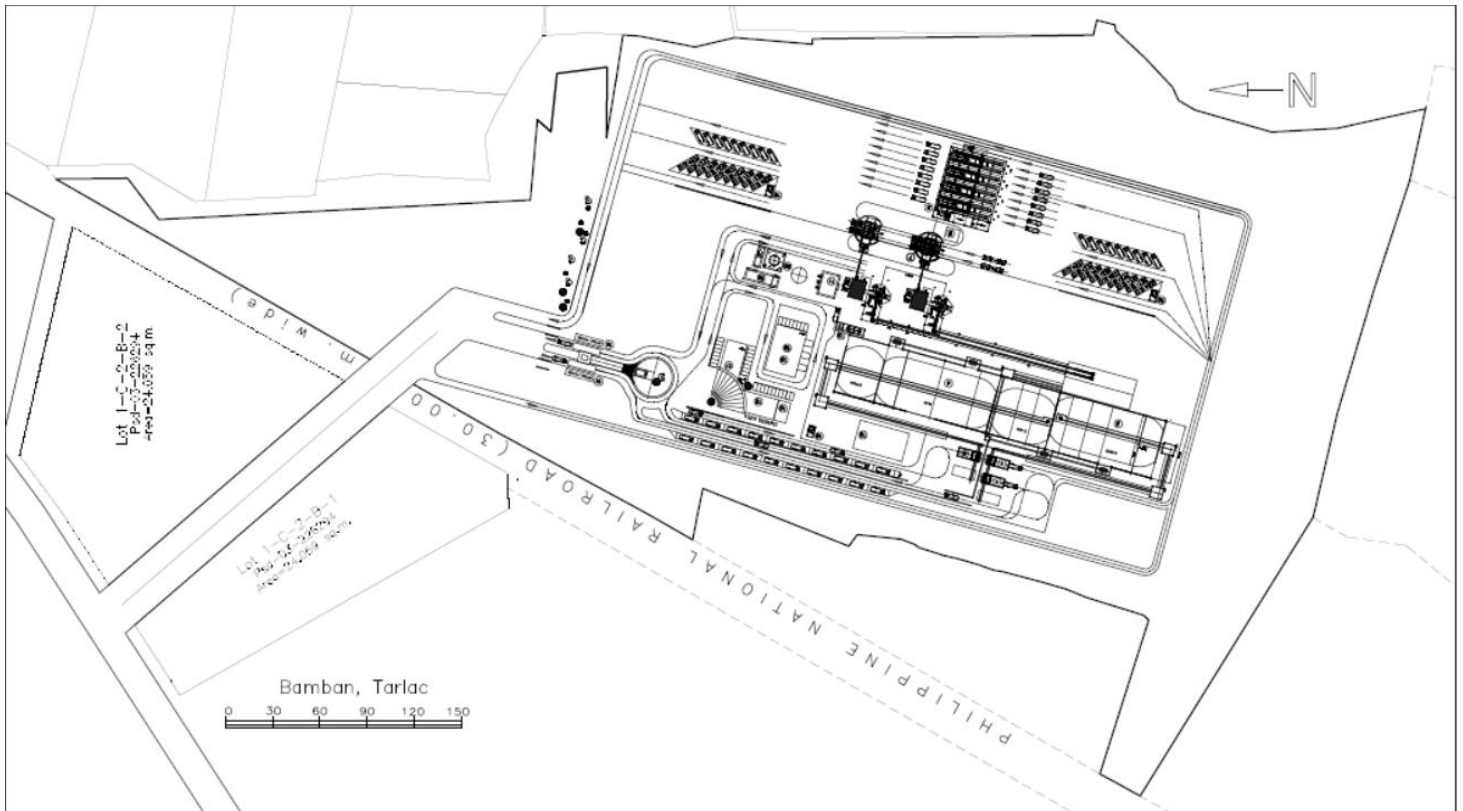
Brys. Dela Cruz and Anupul, Bamban, Tarlac

Annex D: Photographs of the Site



Northern Part of Project Site (Photo taken on 01/16/2019)

ANNEX E: SITE DEVELOPMENT PLAN (PRELIMINARY)



PROJECT DESCRIPTION FOR SCOPING (PDS)

Proposed Cement Grinding Project

Big Boss Cement, Inc.

Brys. Dela Cruz and Anupul, Bamban, Tarlac
